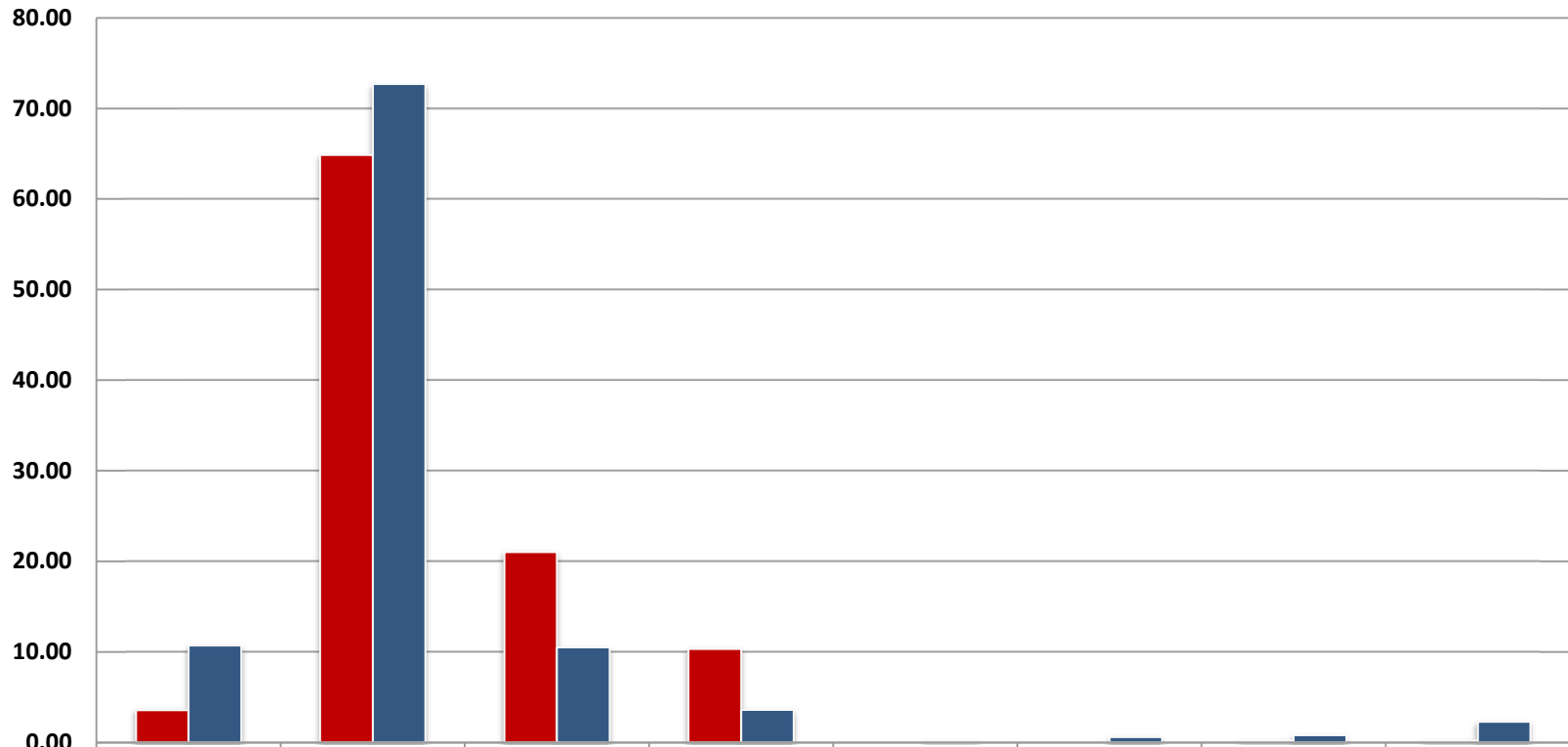
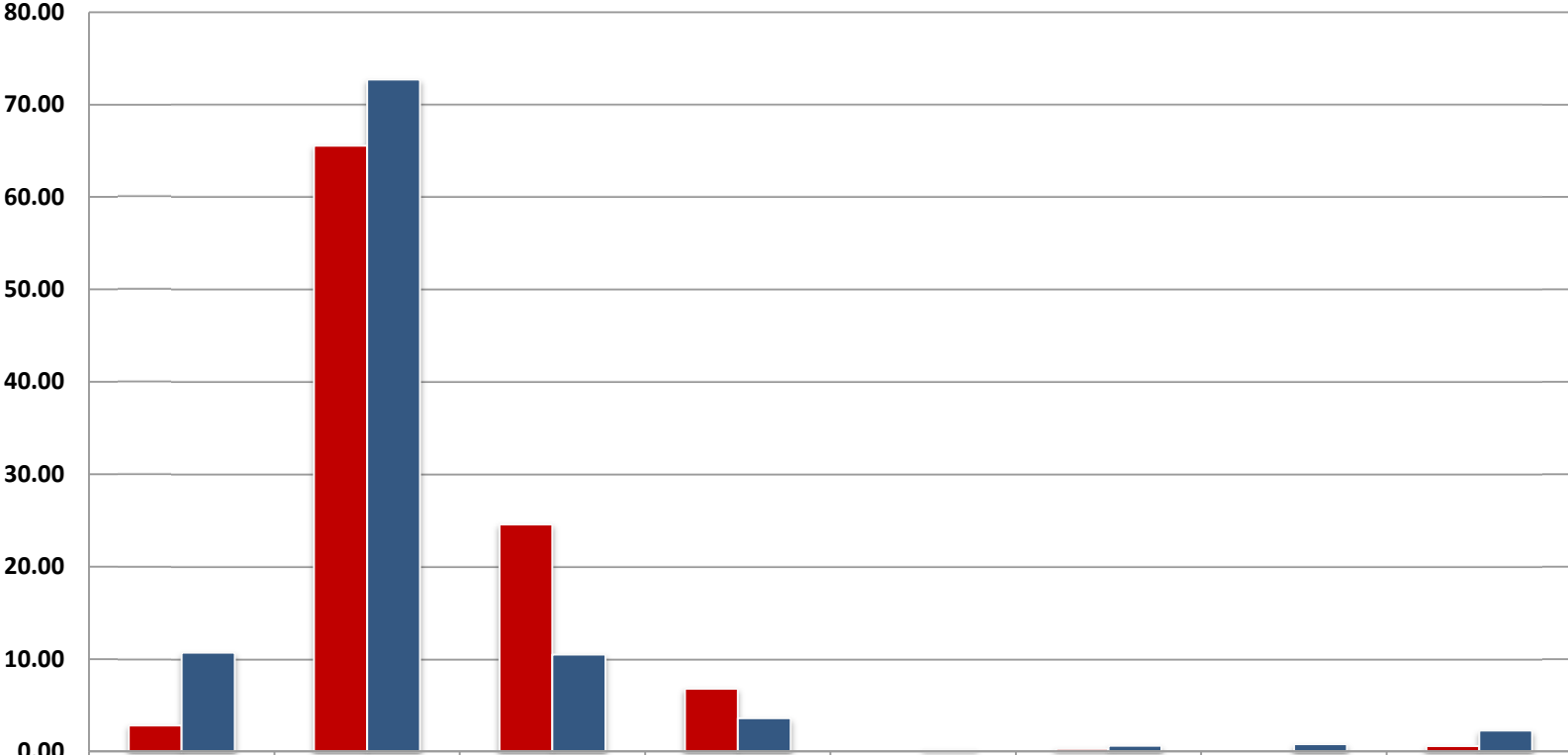


BEA Quarter 1 2012



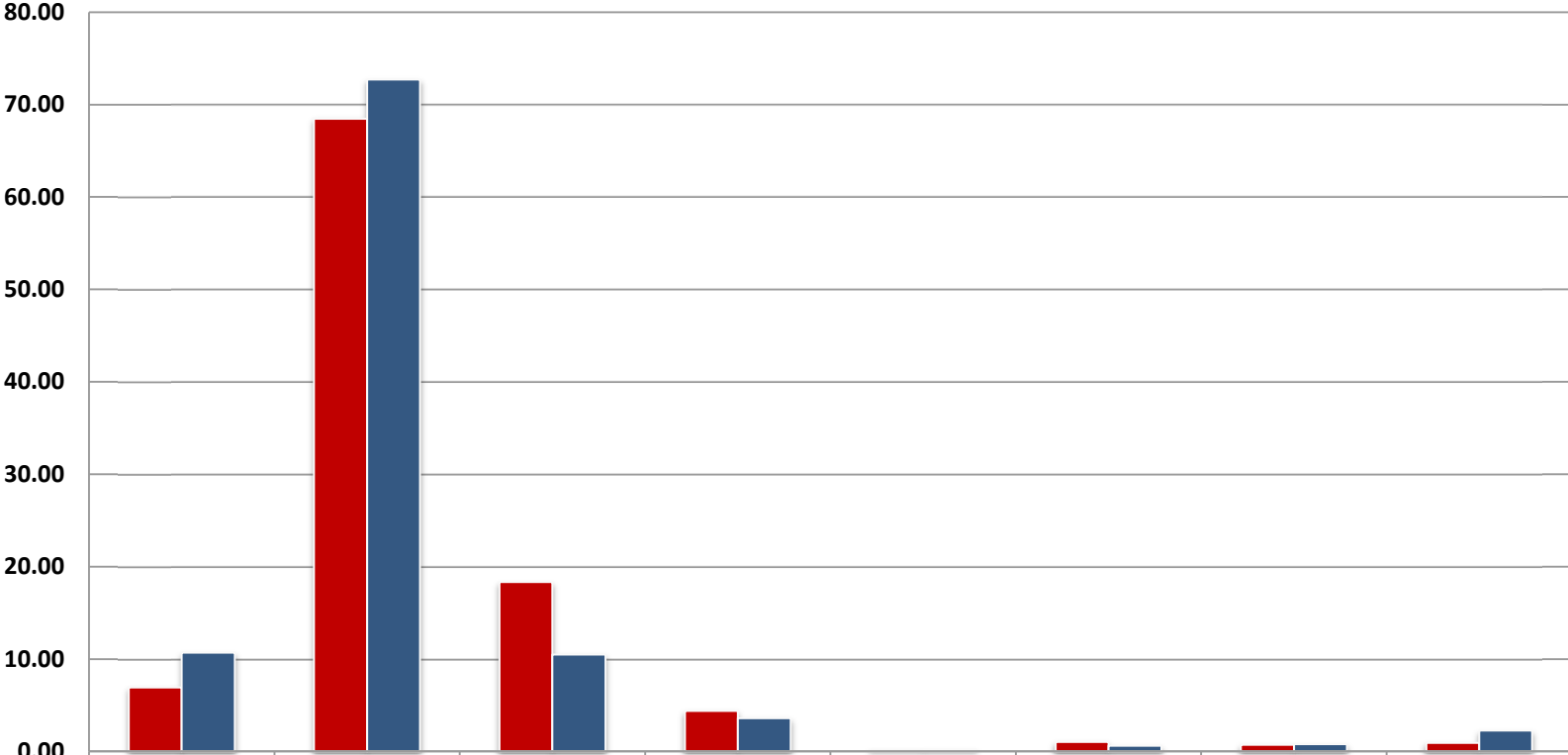
	Hispanic or Latino	White	Black or African American	Asian	Native Hawaiian or Other Pacific Islander	American Indian or Alaska Native	Multiple Races	Targeted Disability
Workforce	3.57	64.88	21.03	10.32	0.00	0.00	0.20	0.20
CLF	10.7	72.7	10.5	3.6	0.2	0.6	0.8	2.27

BIS Quarter 1 2012



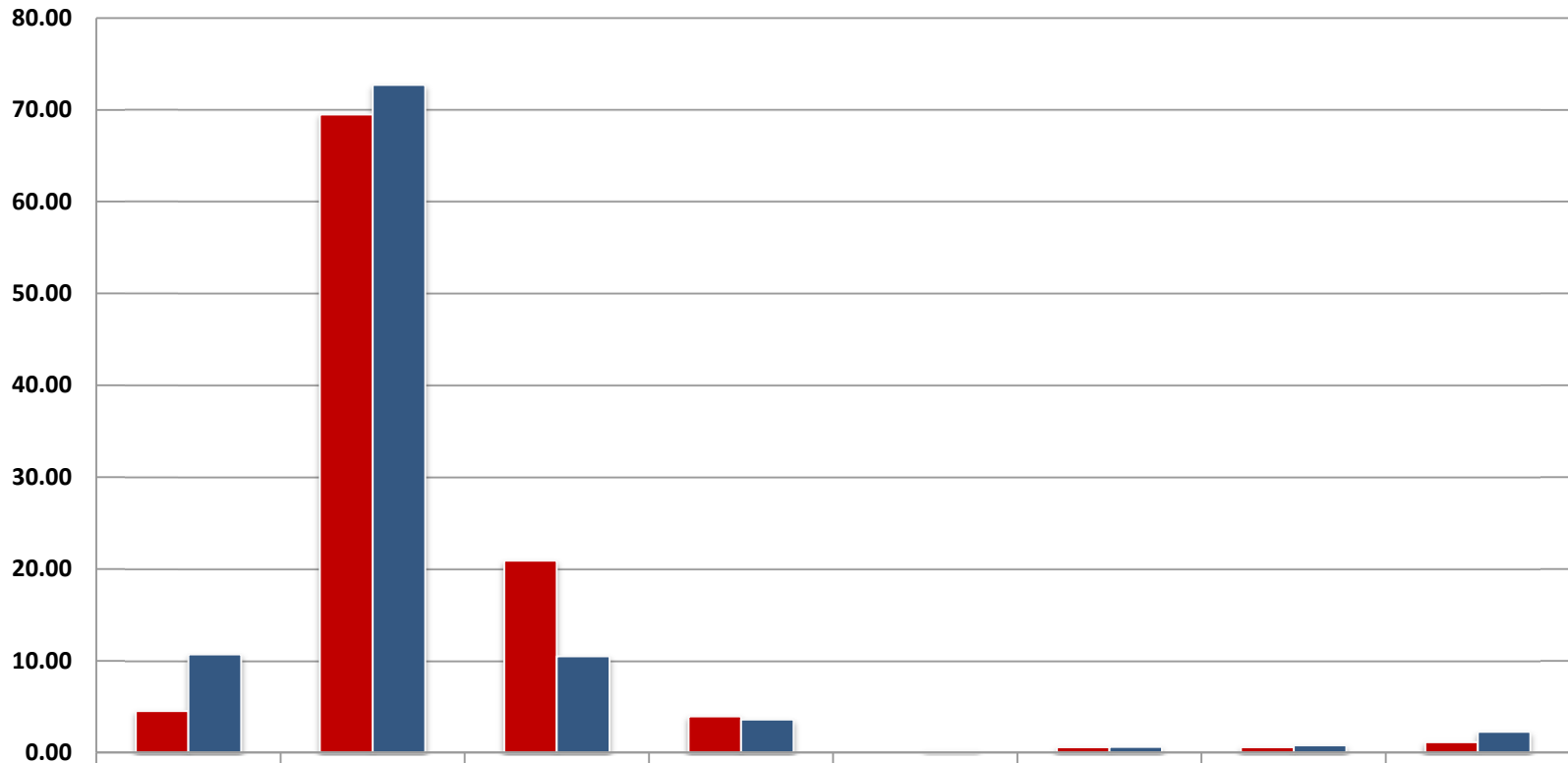
	Hispanic or Latino	White	Black or African American	Asian	Native Hawaiian or Other Pacific Islander	American Indian or Alaska Native	Multiple Races	Targeted Disability
■ Workforce	2.82	65.54	24.58	6.78	0.00	0.28	0.00	0.56
■ CLF	10.7	72.7	10.5	3.6	0.2	0.6	0.8	2.27

Census Quarter 1 2012



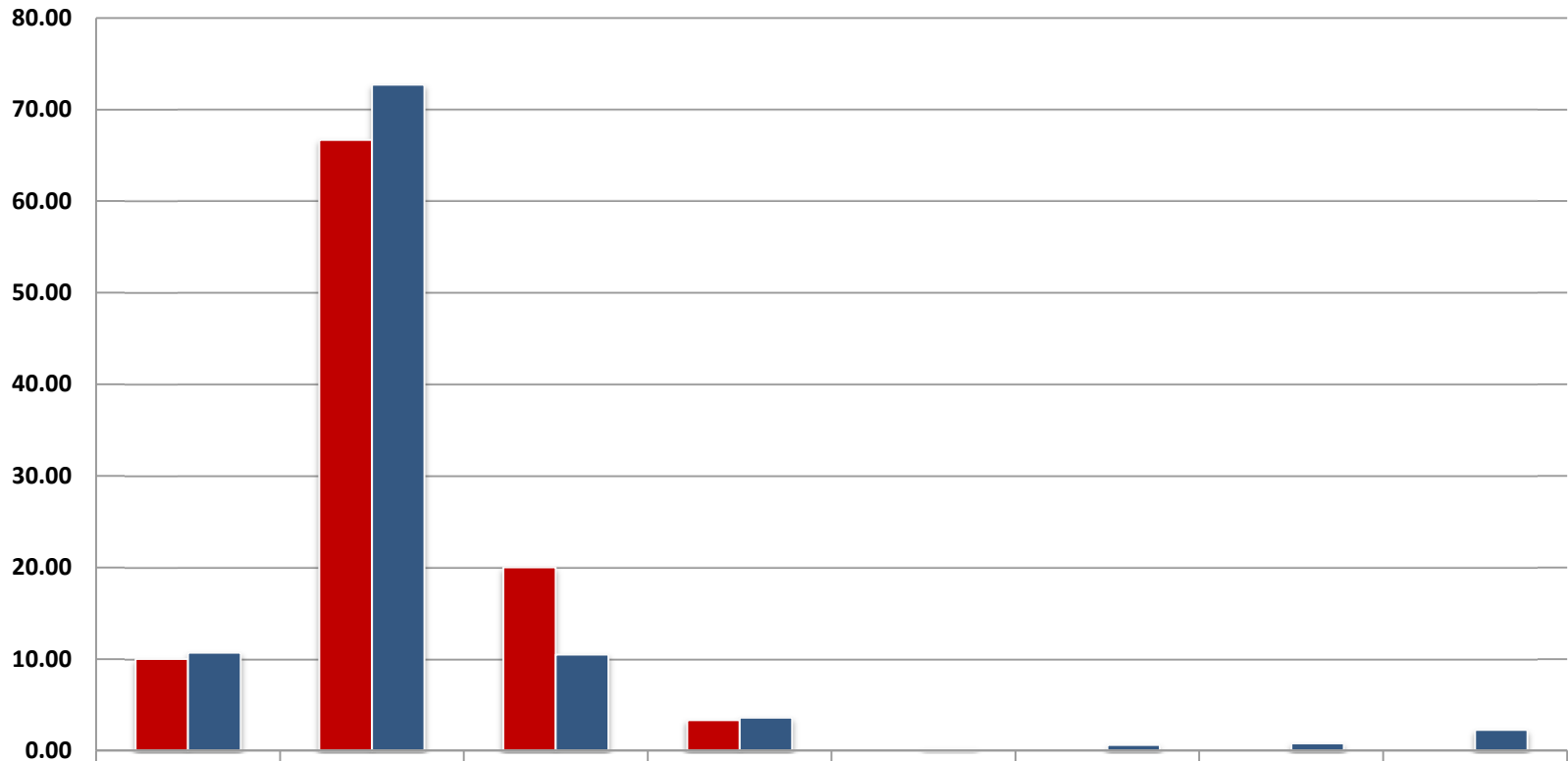
■ Workforce	6.93	68.47	18.32	4.39	0.15	1.04	0.71	0.93
■ CLF	10.7	72.7	10.5	3.6	0.2	0.6	0.8	2.27

EDA Quarter 1 2012



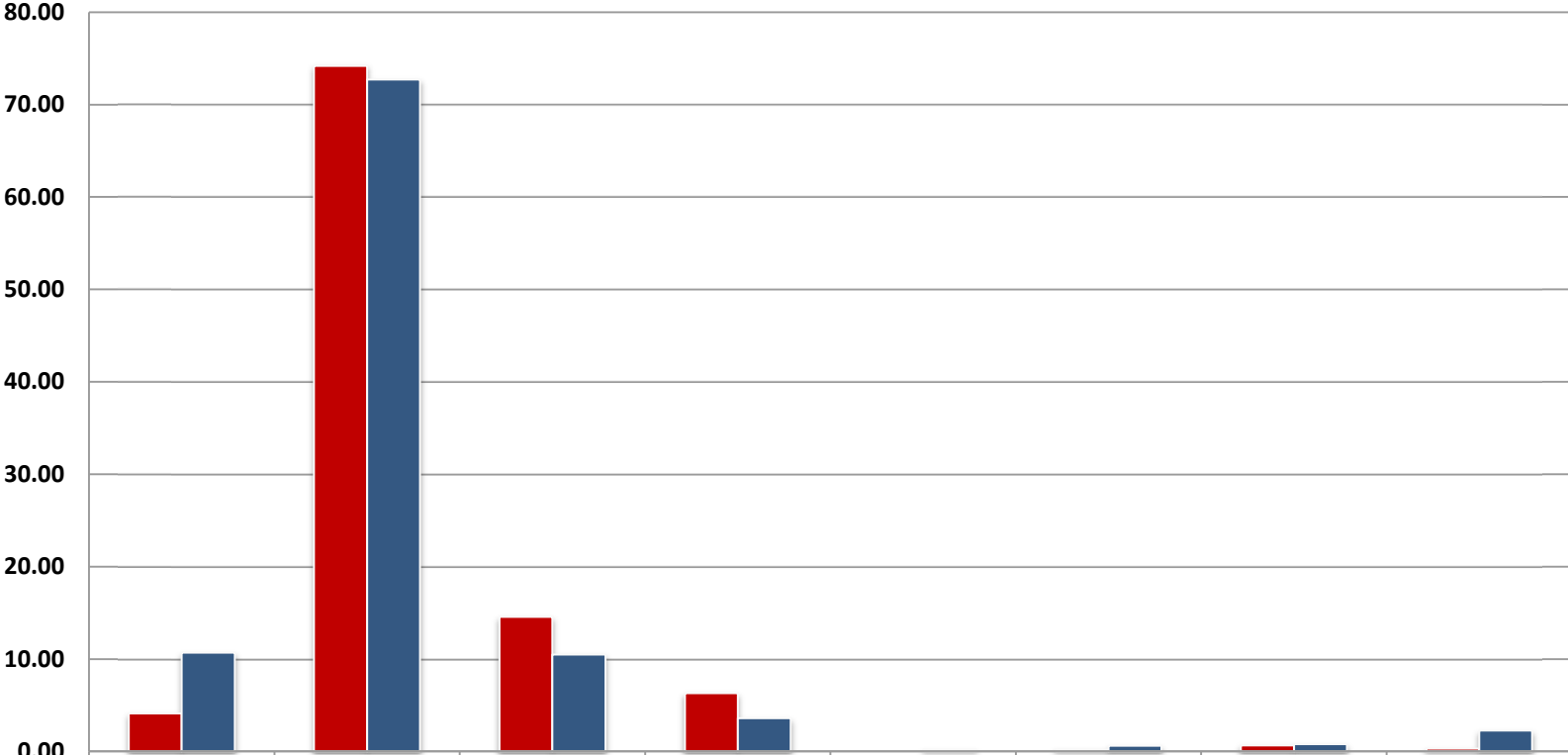
	Hispanic or Latino	White	Black or African American	Asian	Native Hawaiian or Other Pacific Islander	American Indian or Alaska Native	Multiple Races	Targeted Disability
■ Workforce	4.52	69.49	20.90	3.95	0.00	0.56	0.56	1.13
■ CLF	10.7	72.7	10.5	3.6	0.2	0.6	0.8	2.27

ESA Quarter 1 2012



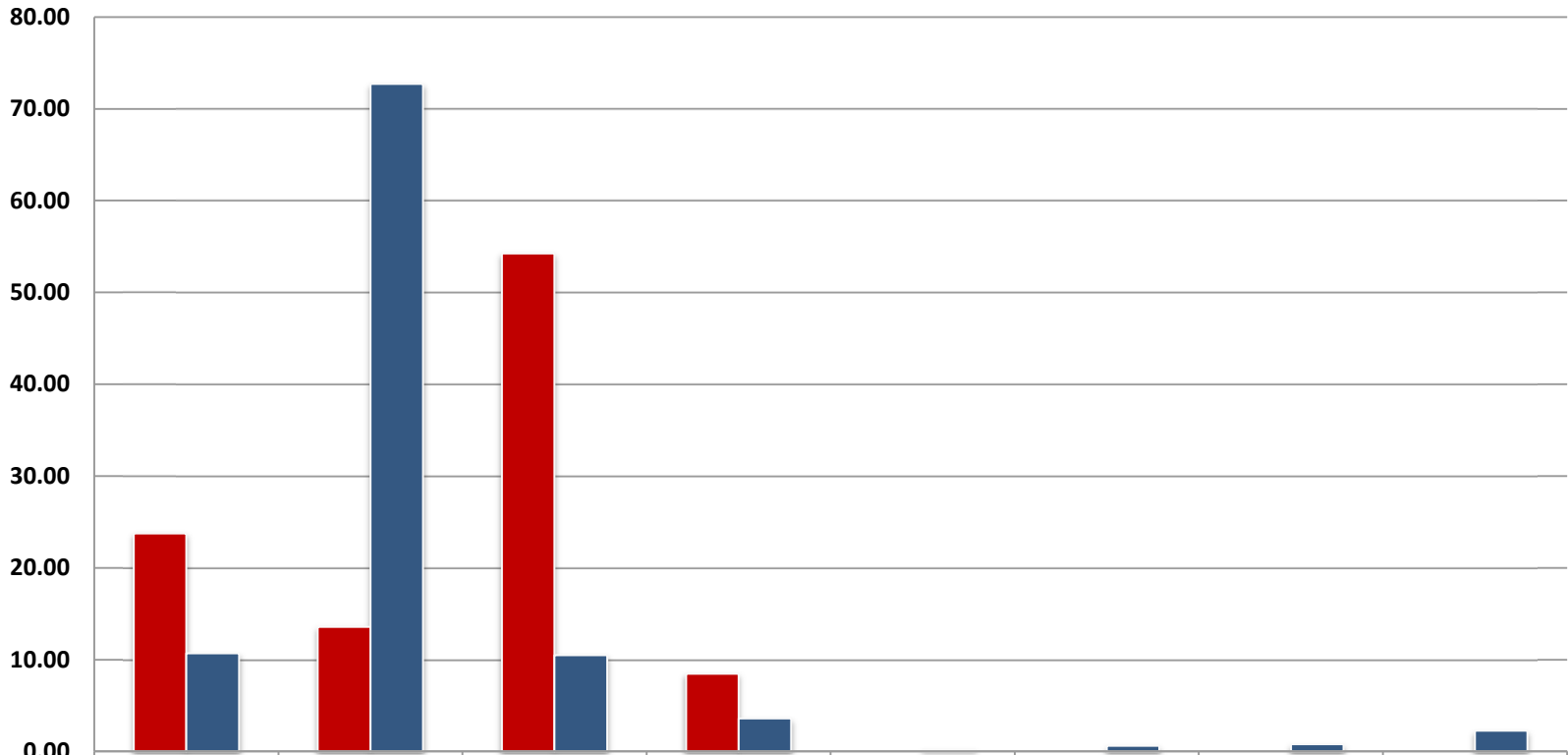
	Hispanic or Latino	White	Black or African American	Asian	Native Hawaiian or Other Pacific Islander	American Indian or Alaska Native	Multiple Races	Targeted Disability
■ Workforce	10.00	66.67	20.00	3.33	0.00	0.00	0.00	0.00
■ CLF	10.7	72.7	10.5	3.6	0.2	0.6	0.8	2.27

ITA Quarter 1 2012



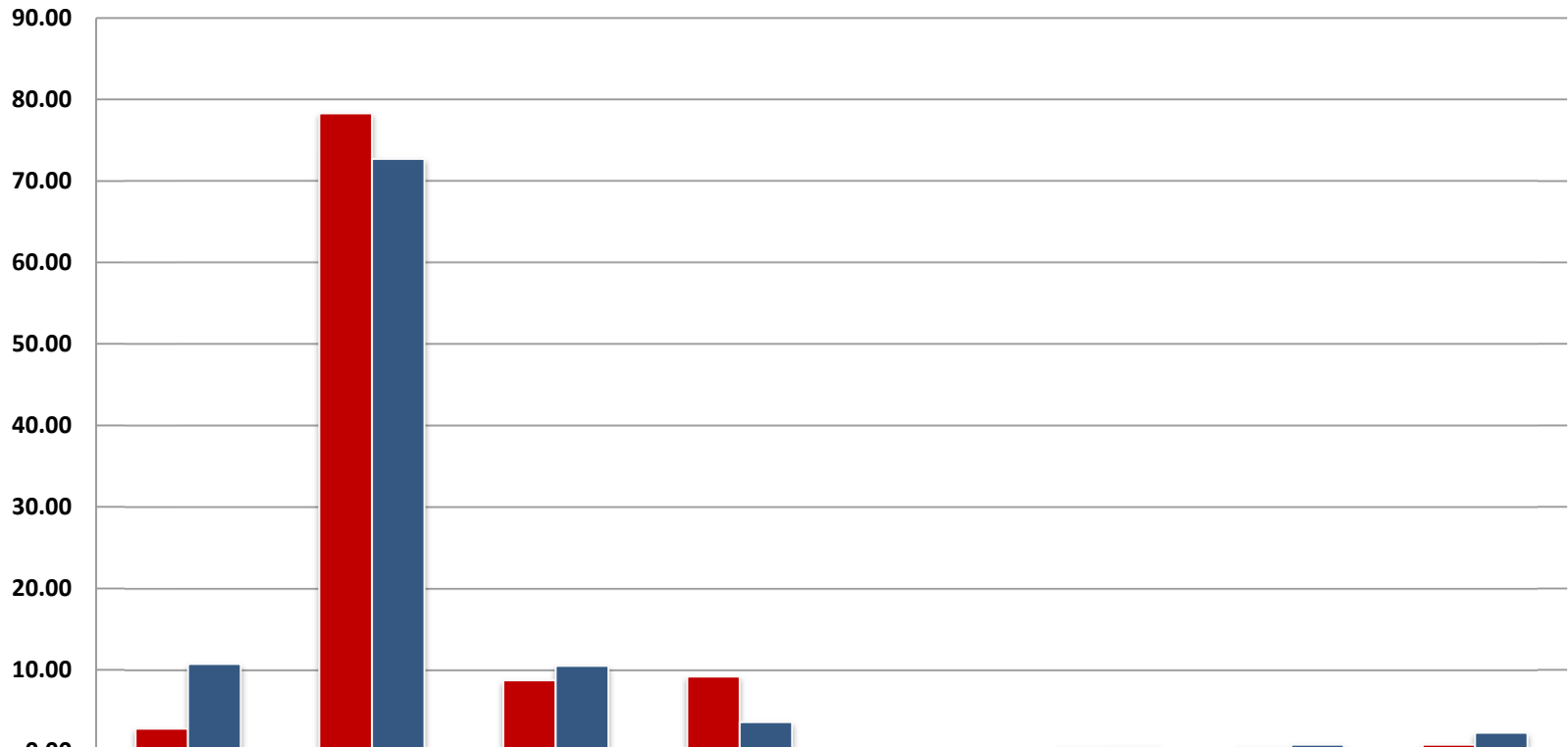
■ Workforce	4.10	74.18	14.56	6.29	0.00	0.22	0.66	0.29
■ CLF	10.7	72.7	10.5	3.6	0.2	0.6	0.8	2.27

MBDA Quarter 1 2012



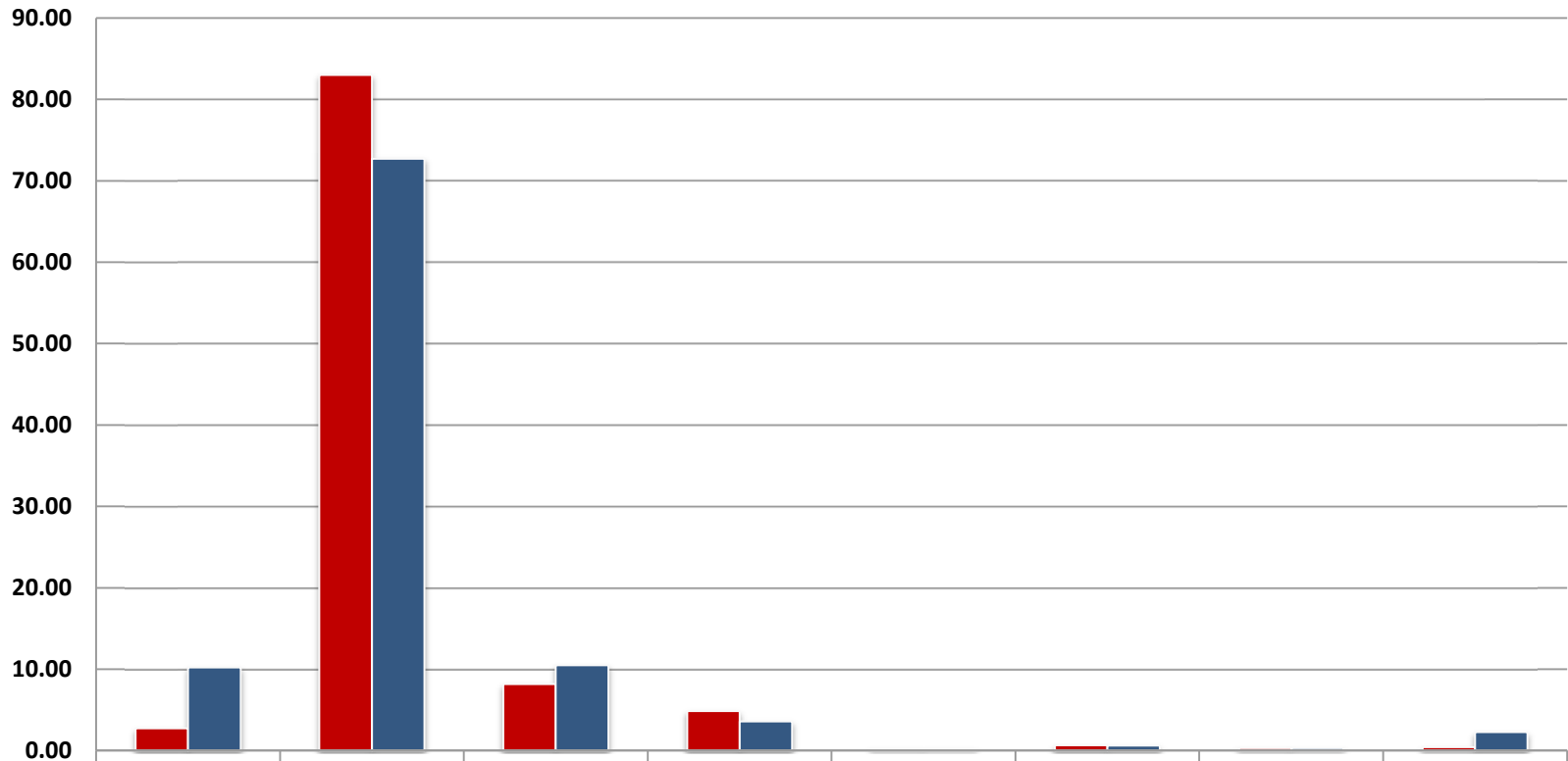
	Hispanic or Latino	White	Black or African American	Asian	Native Hawaiian or Other Pacific Islander	American Indian or Alaska Native	Multiple Races	Targeted Disability
■ Workforce	23.73	13.56	54.24	8.47	0.00	0.00	0.00	0.00
■ CLF	10.7	72.7	10.5	3.6	0.2	0.6	0.8	2.27

NIST Quarter 1 2012



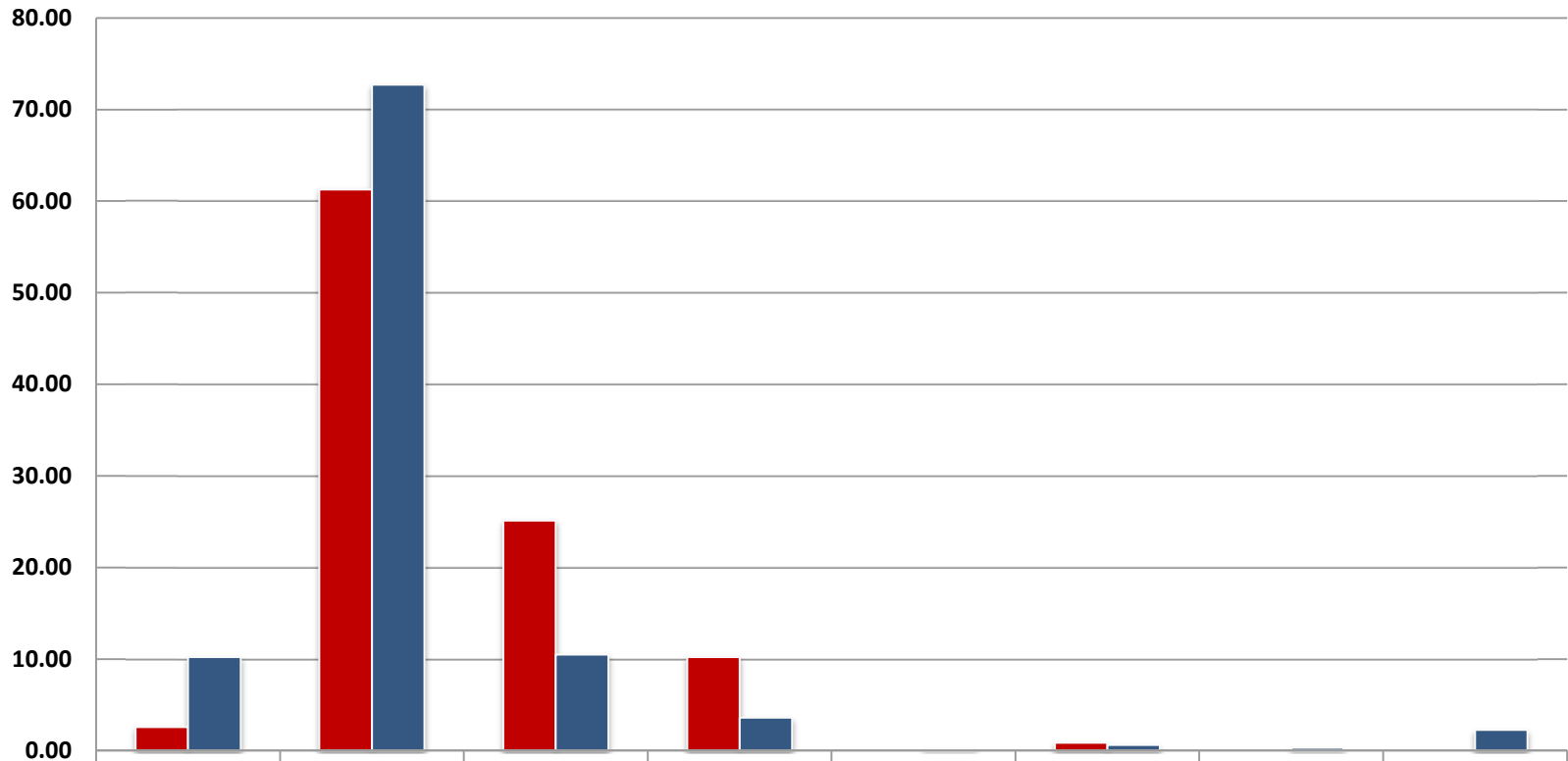
	Hispanic or Latino	White	Black or African American	Asian	Native Hawaiian or Other Pacific Islander	American Indian or Alaska Native	Multiple Races	Targeted Disability
■ Workforce	2.77	78.30	8.72	9.18	0.04	0.46	0.53	0.82
■ CLF	10.7	72.7	10.5	3.6	0.2	0.6	0.8	2.27

NOAA Quarter 1 2012



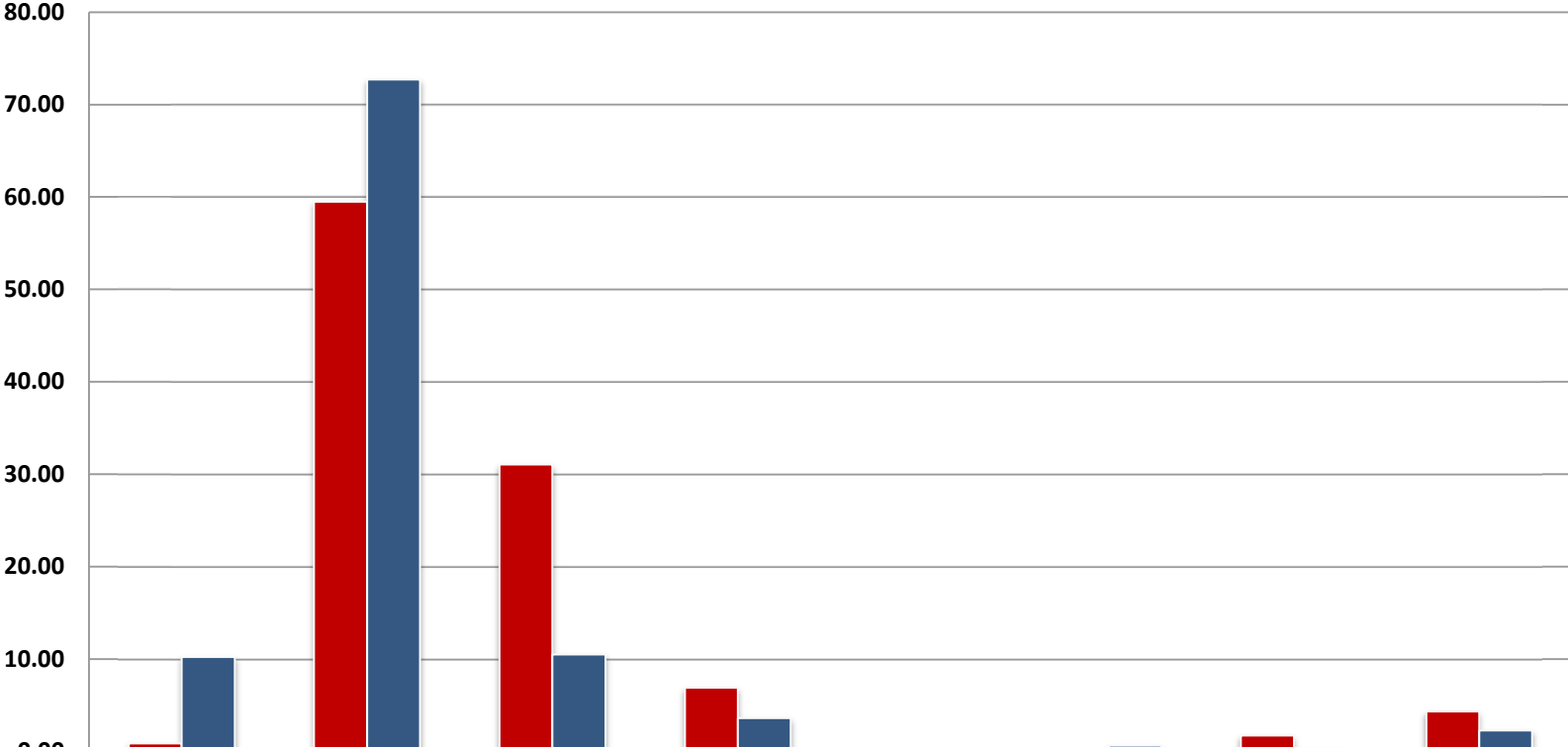
	Hispanic or Latino	White	Black or African American	Asian	Native Hawaiian or Other Pacific Islander	American Indian or Alaska Native	Multiple Races	Targeted Disability
■ Workforce	2.74	83.01	8.18	4.87	0.23	0.65	0.32	0.42
■ CLF	10.2	72.7	10.5	3.6	0.2	0.6	0.3	2.27

NTIA Quarter 1 2012



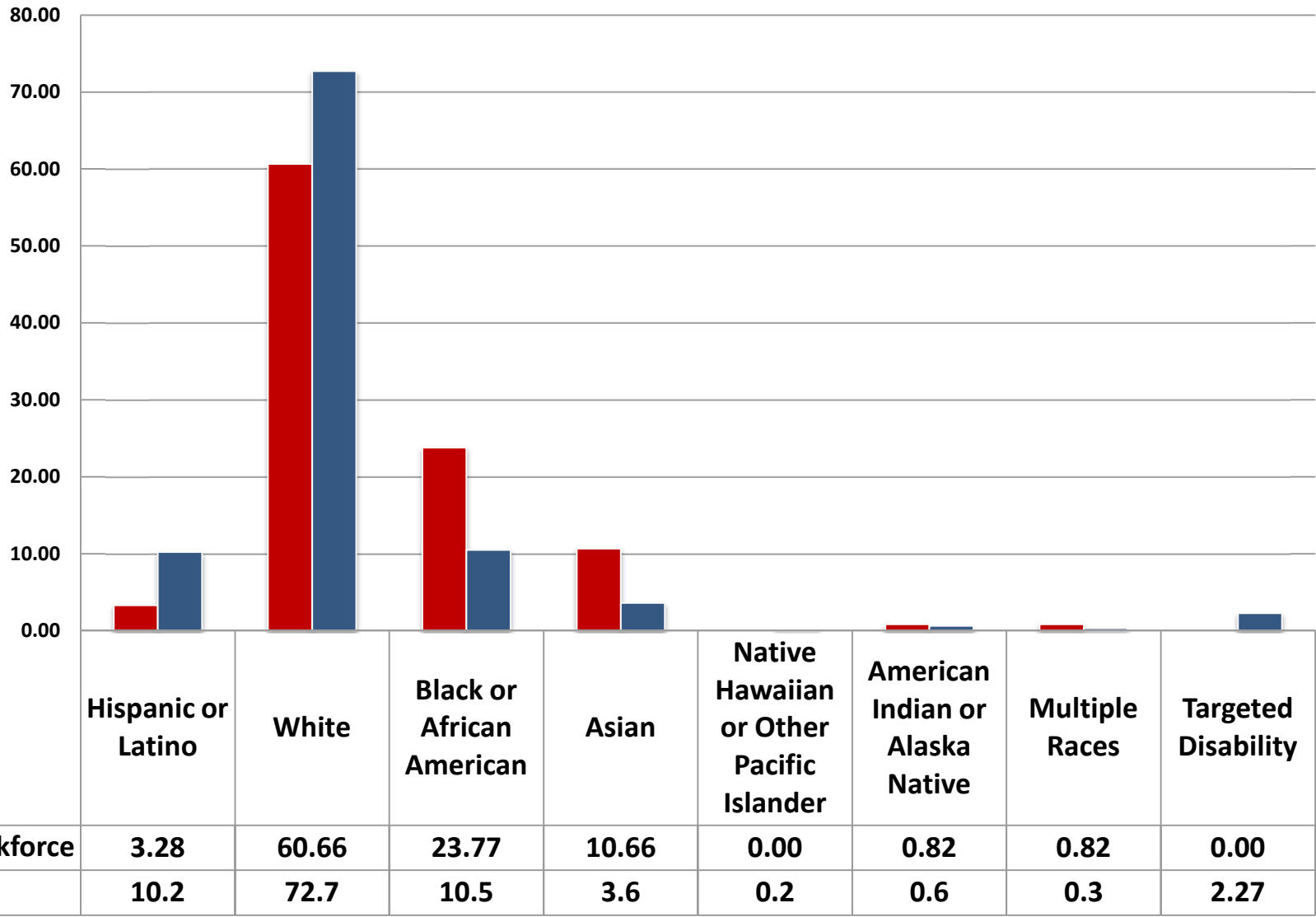
	Hispanic or Latino	White	Black or African American	Asian	Native Hawaiian or Other Pacific Islander	American Indian or Alaska Native	Multiple Races	Targeted Disability
■ Workforce	2.55	61.28	25.11	10.21	0.00	0.85	0.00	0.00
■ CLF	10.2	72.7	10.5	3.6	0.2	0.6	0.3	2.27

NTIS Quarter 1 2012

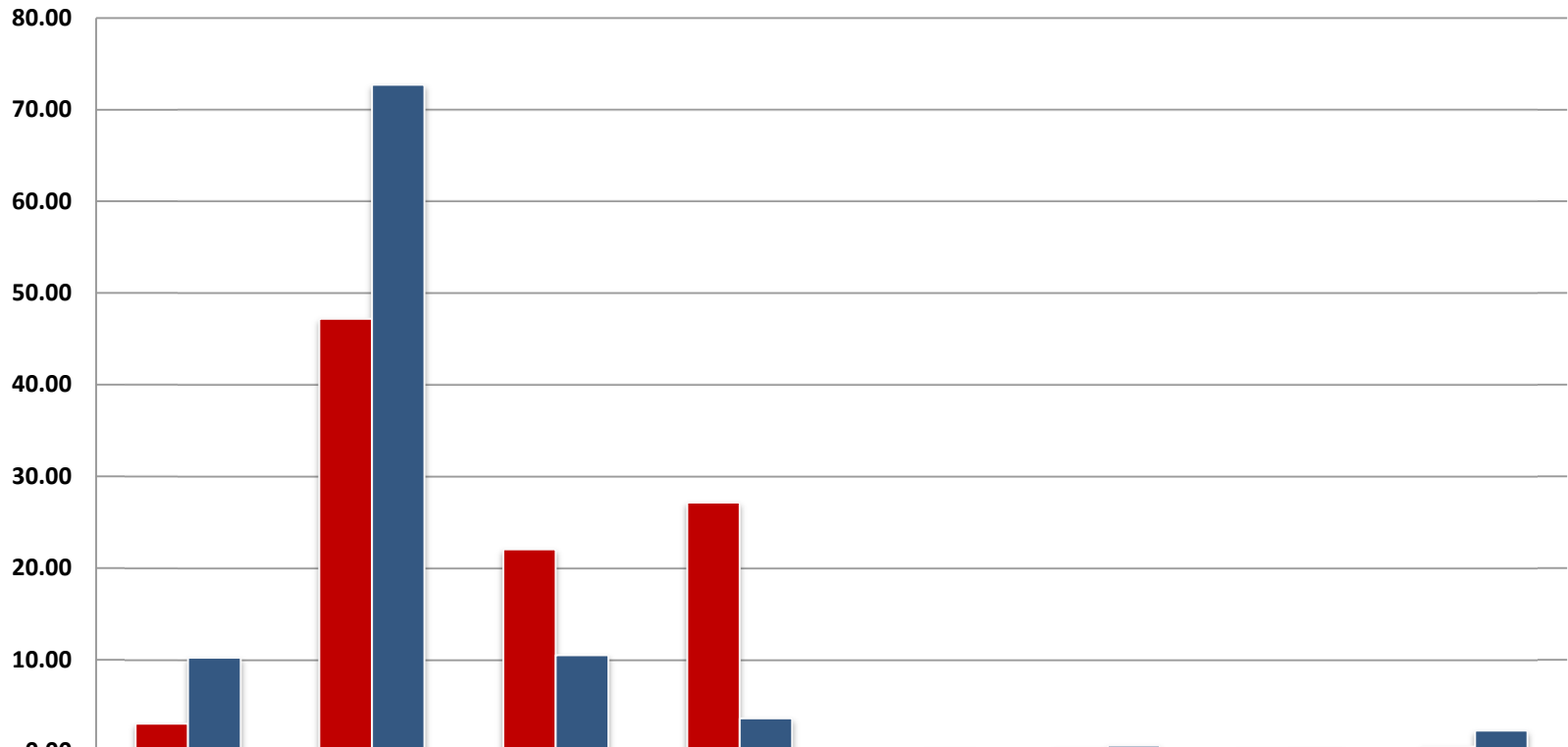


	Hispanic or Latino	White	Black or African American	Asian	Native Hawaiian or Other Pacific Islander	American Indian or Alaska Native	Multiple Races	Targeted Disability
■ Workforce	0.86	59.48	31.03	6.90	0.00	0.00	1.72	4.31
■ CLF	10.2	72.7	10.5	3.6	0.2	0.6	0.3	2.27

OS Quarter 1 2012

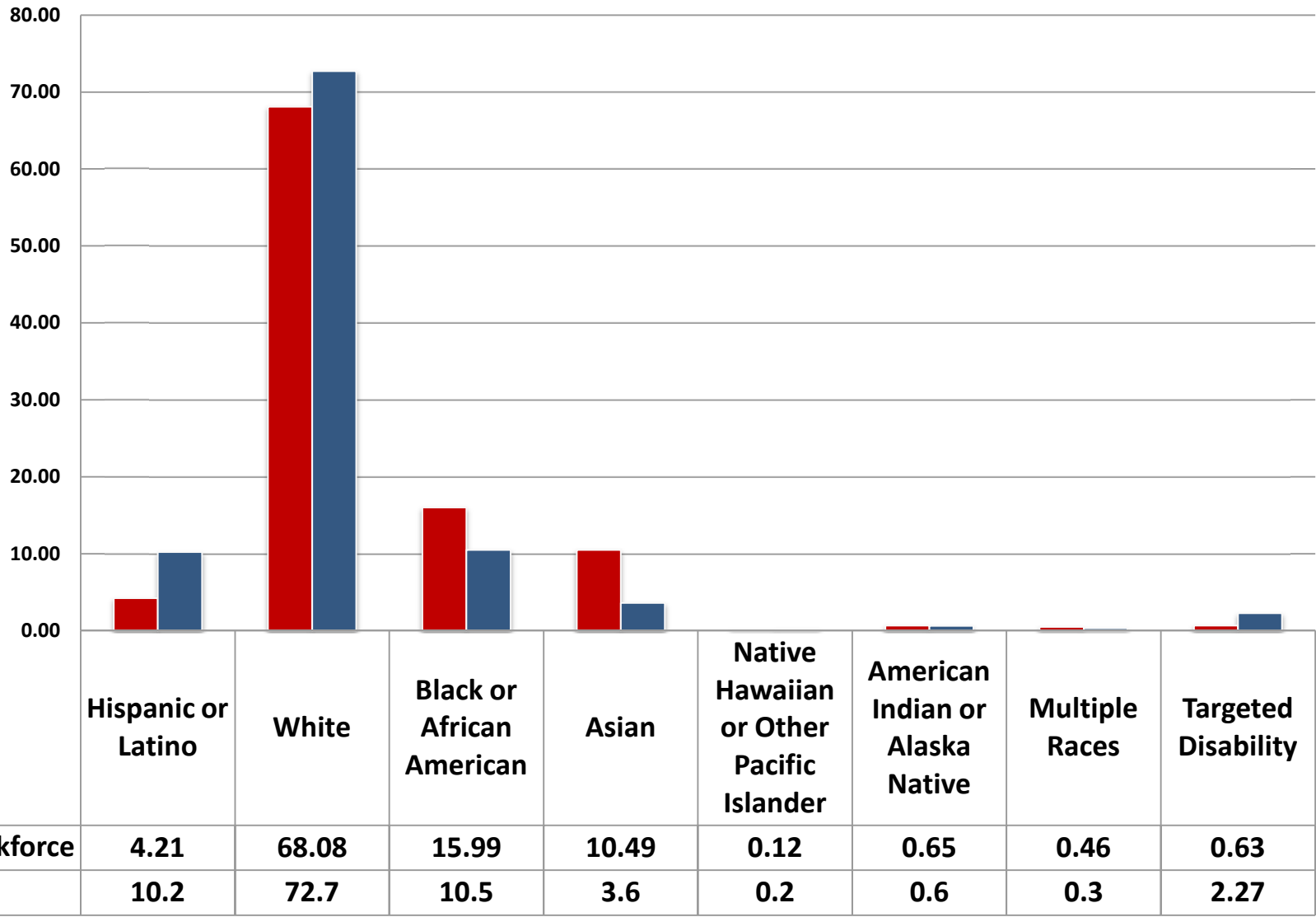


PTO Quarter 1 2012

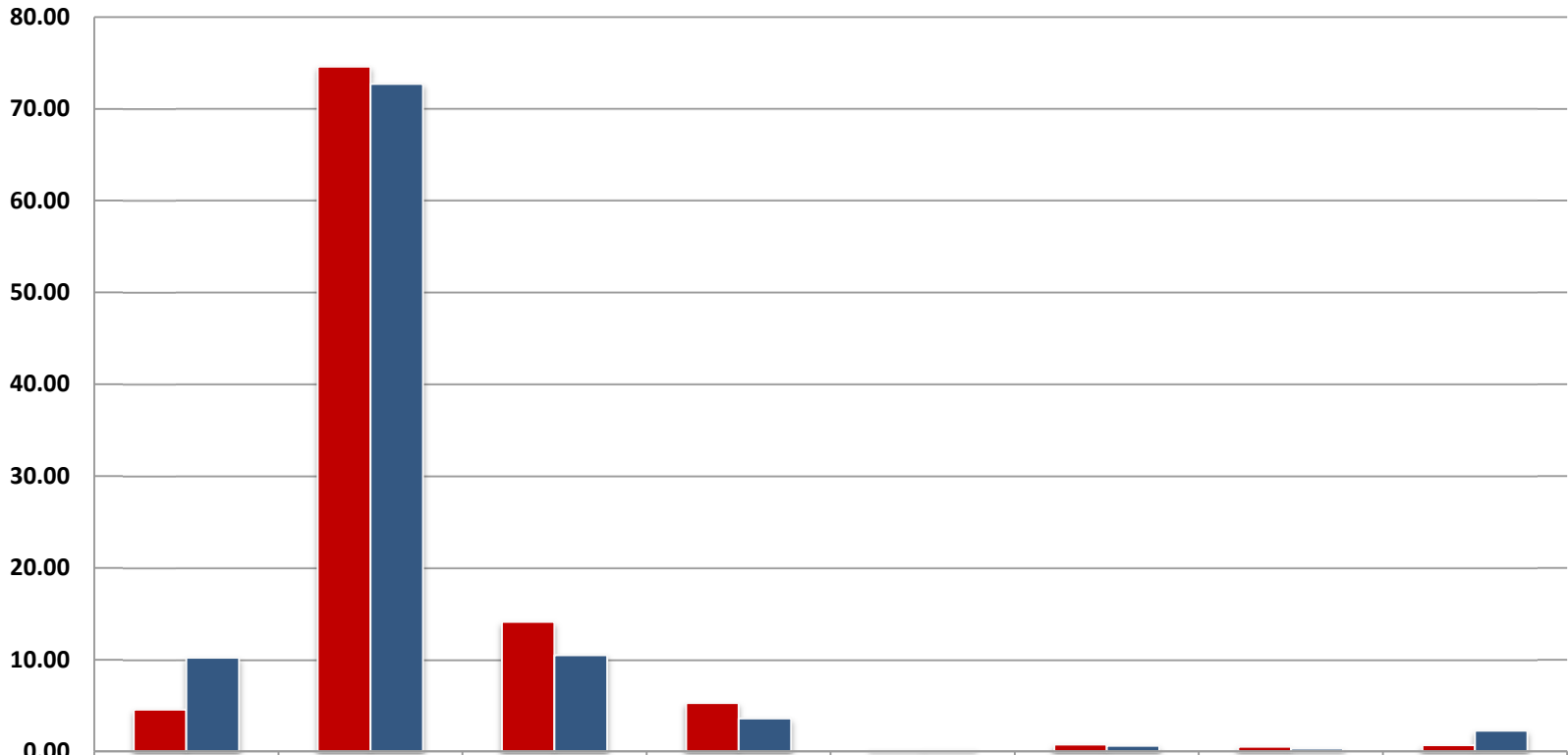


	Hispanic or Latino	White	Black or African American	Asian	Native Hawaiian or Other Pacific Islander	American Indian or Alaska Native	Multiple Races	Targeted Disability
Workforce	3.03	47.19	22.03	27.15	0.01	0.33	0.27	0.52
CLF	10.2	72.7	10.5	3.6	0.2	0.6	0.3	2.27

DOC All Quarter 1 2012



DOC Non-PTO Quarter 1 2012



	Hispanic or Latino	White	Black or African American	Asian	Native Hawaiian or Other Pacific Islander	American Indian or Alaska Native	Multiple Races	Targeted Disability
■ Workforce	4.57	74.60	14.11	5.29	0.15	0.75	0.52	0.67
■ CLF	10.2	72.7	10.5	3.6	0.2	0.6	0.3	2.27

Table A1: TOTAL WORKFORCE - Distribution by Race/Ethnicity and Sex

Employment Tenure	Total Employees	RACE/ETHNICITY						Multiple Races
		Hispanic or Latino	Non-Hispanic or Latino					
			White	Black or African American	Asian	Native Hawaiian or Other Pacific Islander	American Indian or Alaska	
All								

TOTAL

Prior FY	#	48,000	1,995	32,991	7,735	4,668	61	311	239
	%	100.0%	4.2%	68.7%	16.1%	9.7%	0.1%	0.6%	0.5%
Current FY	#	45,842	1,934	31,339	7,341	4,641	56	291	240
	%	100.0%	4.2%	68.4%	16.0%	10.1%	0.1%	0.6%	0.5%
CLF (2000)	%	100.0%	10.2%	72.7%	10.5%	3.6%	0.2%	0.6%	0.3%
Difference	#	-2,158	-61	-1,652	-394	-27	-5	-20	1
Ratio Change	%	0.0%	0.1%	-0.4%	-0.1%	0.4%	0.0%	0.0%	0.0%
Net Change	%	-4.5%	-3.1%	-5.0%	-5.1%	-0.6%	-8.2%	-6.4%	0.4%
PERMANENT									
Prior FY	#	42,647	1,776	29,099	6,806	4,469	52	276	169
	%	100.0%	4.2%	68.2%	16.0%	10.5%	0.1%	0.6%	0.4%
Current FY	#	42,632	1,793	29,025	6,817	4,471	51	278	197
	%	100.0%	4.2%	68.1%	16.0%	10.5%	0.1%	0.7%	0.5%
Difference	#	-15	17	-74	11	2	-1	2	28
Ratio Change	%	0.0%	0.0%	-0.1%	0.0%	0.0%	0.00%	0.00%	0.07%
Net Change	%	0.0%	1.0%	-0.3%	0.2%	0.0%	-1.9%	0.7%	16.6%
TEMPORARY									
Prior FY	#	5,353	219	3,892	929	199	9	35	70
	%	100.0%	4.1%	72.7%	17.4%	3.7%	0.2%	0.7%	1.3%
Current FY	#	3,210	141	2,314	524	170	5	13	43
	%	100.0%	4.4%	72.1%	16.3%	5.3%	0.2%	0.4%	1.3%
Difference	#	-2,143	-78	-1,578	-405	-29	-4	-22	-27
Ratio Change	%	0.0%	0.3%	-0.6%	-1.0%	1.6%	0.0%	-0.2%	0.0%
Net Change	%	-40.0%	-35.6%	-40.5%	-43.6%	-14.6%	-44.4%	-62.9%	-38.6%

Table B1: TOTAL WORKFORCE - Distribution by Disability

Employment Tenure	Total	Total by Disability Status				Detail for Targeted Disabilities									
		[05] No Disability	[01] Not Identified	[06-94] Disability	Targeted Disability	[16,17] Deafness	[23,25] Blindness	[28, 32-38] Missing Limbs	[64-68] Partial Paralysis	[71-78] Total Paralysis	[82] Convulsive Disorder	[90] Mental Re-tardation	[91] Mental Illness	[92] Distortion of Limb/ Spine	
TOTAL															
Prior FY	#	48,000	43,348	1,310	3,011	331	40	24	4	21	11	67	22	135	7
	%	100.0%	90.3%	2.7%	6.3%	0.7%	0.1%	0.1%	0.0%	0.0%	0.0%	0.1%	0.0%	0.3%	0.0%
Current FY	#	45,842	41,548	1,254	2,758	282	24	19	3	15	6	63	22	123	7
	%	1.0%	0.9%	0.0%	0.1%	0.0%	0.0%	0.0%	0.0%	0.0%	0.0%	0.0%	0.0%	0.0%	0.0%
Difference	#	-2,158	-1,800	-56	-253	-49	-16	-5	-1	-6	-5	-4	0	-12	0
Ratio Change	%	0.0%	0.3%	0.0%	-0.3%	-0.1%	0.0%	0.0%	0.0%	0.0%	0.0%	0.0%	0.0%	0.0%	0.0%
Net Change	%	-4.5%	-4.2%	-4.3%	-8.4%	-14.8%	-40.0%	-20.8%	-25.0%	-28.6%	-45.5%	-6.0%	0.0%	-8.9%	0.0%
Federal High	%					2.27%									
PERMANENT															
Prior FY	#	42,647	38842	1078	2426	301	39	24	4	20	10	61	22	116	5
	%	100.0%	91.1%	2.5%	5.7%	0.7%	0.1%	0.1%	0.0%	0.0%	0.0%	0.1%	0.1%	0.3%	0.0%
Current FY	#	42,632	38801	1094	2467	270	23	19	3	15	6	60	22	117	5
	%	1.0%	0.9%	0.0%	0.1%	0.0%	0.0%	0.0%	0.0%	0.0%	0.0%	0.0%	0.0%	0.0%	0.0%
Difference	#	-15	-41	16	41	-31	-16	-5	-1	-5	-4	-1	0	1	0
Ratio Change	%	0.0%	-0.1%	0.0%	0.1%	-0.1%	0.0%	0.0%	0.0%	0.0%	0.0%	0.0%	0.0%	0.0%	0.0%
Net Change	%	0.0%	-0.1%	1.5%	1.7%	-10.3%	-41.0%	-20.8%	-25.0%	-25.0%	-40.0%	-1.6%	0.0%	0.9%	0.0%
TEMPORARY															
Prior FY	#	5,353	4506	232	585	30	1	0	0	1	1	6	0	19	2
	%	100.0%	84.2%	4.3%	10.9%	0.6%	0.0%	0.0%	0.0%	0.0%	0.0%	0.1%	0.0%	0.4%	0.0%
Current FY	#	3,210	2747	160	291	12	1	0	0	0	0	3	0	6	2
	%	1.0%	0.9%	0.0%	0.1%	0.0%	0.0%	0.0%	0.0%	0.0%	0.0%	0.0%	0.0%	0.0%	0.0%
Difference	#	-2,143	-1,759	-72	-294	-18	0	0	0	-1	-1	-3	0	-13	0
Ratio Change	%	0.0%	1.4%	0.7%	-1.9%	-0.2%	0.0%	0.0%	0.0%	0.0%	0.0%	0.0%	0.0%	-0.2%	0.0%
Net Change	%	-40.0%	-39.0%	-31.0%	-50.3%	-60.0%	0.0%	#DIV/0!	#DIV/0!	-100.0%	-100.0%	-50.0%	#DIV/0!	-68.4%	0.0%

Department of Commerce/FY 2011 Qtr 1

Table A2: TOTAL WORKFORCE (PERMANENT EMPLOYEES ONLY) BY COMPONENT - Distributi

Employment Tenure		Total Employees	RACE/ETHNICITY							
			Hispanic or Latino	Non-Hispanic or Latino					American Indian or Alaska Native	Multiple Races
				White	Black or African American	Asian	Native Hawaiian or Other Pacific Islander			
All										
TOTAL FY	#	42,632	1,793	29,025	6,817	4,471	51	278	197	
	%	100%	4.2%	68.1%	16.0%	10.5%	0.1%	0.7%	0.5%	
CLF (2000)	%	100%	10.7%	72.7%	10.5%	3.6%	0.2%	0.6%	0.0%	
51-O/S	#	770	20	422	278	40	0	4	6	
	%	100.0%	2.6%	54.8%	36.1%	5.2%	0.0%	0.5%	30.0%	
52-EDA	#	177	8	123	37	7	0	1	1	
	%	100.0%	4.5%	69.5%	20.9%	4.0%	0.0%	0.6%	12.5%	
53-BEA	#	504	18	327	106	52	0	0	1	
	%	100.0%	3.6%	64.9%	21.0%	10.3%	0.0%	0.0%	5.6%	
54-NOAA	#	12647	347	10498	1034	616	29	82	41	
	%	100.0%	2.7%	83.0%	8.2%	4.9%	0.2%	0.6%	11.8%	
55-ITA	#	1367	56	1014	199	86	0	3	9	
	%	100.0%	4.1%	74.2%	14.6%	6.3%	0.0%	0.2%	16.1%	
57-NIST	#	2820	78	2208	246	259	1	13	15	
	%	100.0%	2.8%	78.3%	8.7%	9.2%	0.0%	0.5%	19.2%	
59-MBDA	#	59	14	8	32	5	0	0	0	
	%	100.0%	23.7%	13.6%	54.2%	8.5%	0.0%	0.0%	0.0%	
61-NTIA	#	235	6	144	59	24	0	2	0	
	%	100.0%	2.6%	61.3%	25.1%	10.2%	0.0%	0.9%	0.0%	
62-NTIS	#	116	1	69	36	8	0	0	2	
	%	100.0%	0.9%	59.5%	31.0%	6.9%	0.0%	0.0%	200.0%	
63-CENSUS	#	13295	921	9103	2435	584	20	138	94	
	%	100.0%	6.9%	68.5%	18.3%	4.4%	0.2%	1.0%	10.2%	
64-OIG	#	122	4	74	29	13	0	1	1	
	%	100.0%	3.3%	60.7%	23.8%	10.7%	0.0%	0.8%	25.0%	
65-ESA	#	30	3	20	6	1	0	0	0	
	%	100.0%	10.0%	66.7%	20.0%	3.3%	0.0%	0.0%	0.0%	
67-BIS	#	354	10	232	87	24	0	1	0	
	%	100.0%	2.8%	65.5%	24.6%	6.8%	0.0%	0.3%	0.0%	
67-PTO	#	10136	307	4783	2233	2752	1	33	27	
	%	100.0%	3.0%	47.2%	22.0%	27.2%	0.0%	0.3%	8.8%	

PTOTAL	PHISPMAL	WHMAL	BLMAL	SIANMAL	HAWMAL	INDMAL	Multiple Race	TTOTAL	HISPMAL	TWHMAL
817	22	444	299	42	1	5	4	84	1	51
177	9	120	37	10	0	1	0	58	0	46
515	14	337	109	55	0	0	0	16	0	11
12829	334	10698	1054	618	26	85	14	417	9	332
1456	55	1083	217	90	0	3	8	127	7	99
2830	80	2233	246	249	1	13	8	391	6	311

74	18	10	41	5	0	0	0	17	3	1
258	6	159	62	29	0	2	0	50	0	44
120	1	78	34	7	0	0	0	0	0	0
12921	830	8914	2399	567	15	129	67	4206	218	2735
164	5	108	34	15	0	1	1	18	1	11
36	3	24	7	2	0	0	0	4	0	3
346	9	230	86	20	0	1	0	14	0	9
9932	266	4741	2216	2657	0	38	14	53	0	46

TBLMALE	ASIANMAL	NHAWMAL	AMINDMAL	Multiple Rac	AGENCY	
22	7	0	1	2	O/S	51
10	2	0	0	0	EDA	52
4	1	0	0	0	BEA	53
41	23	5	4	3	NOAA	54
6	14	0	1	0	ITA	55
17	51	1	0	5	NIST	57

10	0	0	1	2	MBDA	59
5	1	0	0	0	NTIA	61
0	0	0	0	0	NTIS	62
993	167	9	32	52	CENSUS	63
5	1	0	0	0	OIG	64
1	0	0	0	0	ESA	65
2	2	0	0	1	BIS	67
4	2	0	0	1	PTO	56

Table B2: PERMANENT EMPLOYEES - TOTAL WORKFORCE BY COMPONENT- Distribution by Disability [OPM Form 256 Self-Identification Codes]

Employment Tenure	Total	Total by Disability Status				Detail for Targeted Disabilities									
		[05] No Disability	[01] Not Identified	[06-94] Disability	Targeted Disability	[16,17] Deafness	[23,25] Blindness	[28,32-38] Missing Limbs	[64-68] Partial Paralysis	[71-78] Total Paralysis	[82] Convulsive Disorder	[90] Mental Retardation	[91] Mental Illness	[92] Distortion of Limb/Spine	
Total Work Force	#	42,632	38,801	1,094	2,467	270	23	19	3	15	6	60	22	117	5
	%	100.00%	91.01%	2.57%	5.79%	0.63%	0.05%	0.04%	0.01%	0.04%	0.01%	0.14%	0.05%	0.27%	0.01%
Federal High	%				2.27%										
51-O/S	#	770	705	21	40	4	0	0	0	0	0	2	0	2	0
	%	100.00%	91.56%	2.73%	5.19%	0.52%	0.00%	0.00%	0.00%	0.00%	0.00%	0.26%	0.00%	0.26%	0.00%
52-EDA	#	177	165	3	7	2	0	0	0	1	0	0	0	1	0
	%	100.00%	93.22%	1.69%	3.95%	1.13%	0.00%	0.00%	0.00%	0.56%	0.00%	0.00%	0.00%	0.56%	0.00%
53-BEA	#	504	472	13	18	1	1	0	0	0	0	0	0	0	0
	%	100.00%	93.65%	2.58%	3.57%	0.20%	0.20%	0.00%	0.00%	0.00%	0.00%	0.00%	0.00%	0.00%	0.00%
54-NOAA	#	12,647	11721	254	619	53	7	7	1	1	4	8	5	20	0
	%	100.00%	92.68%	2.01%	4.89%	0.42%	0.06%	0.06%	0.01%	0.01%	0.03%	0.06%	0.04%	0.16%	0.00%
55-ITA	#	1,367	1308	16	39	4	0	1	0	0	0	0	0	3	0
	%	100.00%	95.68%	1.17%	2.85%	0.29%	0.00%	0.07%	0.00%	0.00%	0.00%	0.00%	0.00%	0.22%	0.00%
57-NIST	#	2,820	2588	71	138	23	1	2	2	1	0	2	6	7	2
	%	100.00%	91.77%	2.52%	4.89%	0.82%	0.04%	0.07%	0.07%	0.04%	0.00%	0.07%	0.21%	0.25%	0.07%
59-MBDA	#	59	50	3	6	0	0	0	0	0	0	0	0	0	0
	%	100.00%	84.75%	5.08%	10.17%	0.00%	0.00%	0.00%	0.00%	0.00%	0.00%	0.00%	0.00%	0.00%	0.00%
61-NTIA	#	235	213	4	18	0	0	0	0	0	0	0	0	0	0
	%	100.00%	90.64%	1.70%	7.66%	0.00%	0.00%	0.00%	0.00%	0.00%	0.00%	0.00%	0.00%	0.00%	0.00%
62-NTIS	#	116	104	1	6	5	1	0	0	0	0	0	2	1	1
	%	100.00%	89.66%	0.86%	5.17%	4.31%	0.86%	0.00%	0.00%	0.00%	0.00%	0.00%	1.72%	0.86%	0.86%
63-CENSUS	#	13,295	11610	380	1182	123	7	5	0	6	1	32	8	63	1
	%	100.00%	87.33%	2.86%	8.89%	0.93%	0.05%	0.04%	0.00%	0.05%	0.01%	0.24%	0.06%	0.47%	0.01%
64-OIG	#	122	112	2	8	0	0	0	0	0	0	0	0	0	0
	%	100.00%	91.80%	1.64%	6.56%	0.00%	0.00%	0.00%	0.00%	0.00%	0.00%	0.00%	0.00%	0.00%	0.00%
65-ESA	#	30	29	0	1	0	0	0	0	0	0	0	0	0	0
	%	100.00%	96.67%	0.00%	3.33%	0.00%	0.00%	0.00%	0.00%	0.00%	0.00%	0.00%	0.00%	0.00%	0.00%
67-BIS	#	354	339	2	11	2	0	0	0	0	0	0	0	2	0
	%	100.00%	95.76%	0.56%	3.11%	0.56%	0.00%	0.00%	0.00%	0.00%	0.00%	0.00%	0.00%	0.56%	0.00%

AGENCY	PTOTAL	Hispanic or Latino	White	Black or African American	Asian	Native Hawaiian or Other Pacific Islander	American Indian or Alaska Native	Multiple Races
BEA	504	18	327	106	52	0	0	1
Workforce		3.57	64.88	21.03	10.32	0.00	0.00	0.20
CLF		10.2	72.7	10.5	3.6	0.2	0.6	0.3
BIS	354	10	232	87	24	0	1	0
Workforce		2.82	65.54	24.58	6.78	0.00	0.28	0.00
CLF		10.7	72.7	10.5	3.6	0.2	0.6	0.8
CENSUS	13295	921	9103	2435	584	20	138	94
Workforce		6.93	68.47	18.32	4.39	0.15	1.04	0.71
CLF		10.7	72.7	10.5	3.6	0.2	0.6	0.8
EDA	177	8	123	37	7	0	1	1
Workforce		4.52	69.49	20.90	3.95	0.00	0.56	0.56
CLF		10.7	72.7	10.5	3.6	0.2	0.6	0.8
ESA	30	3	20	6	1	0	0	0
Workforce		10.00	66.67	20.00	3.33	0.00	0.00	0.00
CLF		10.7	72.7	10.5	3.6	0.2	0.6	0.8
ITA	1367	56	1014	199	86	0	3	9
Workforce		4.10	74.18	14.56	6.29	0.00	0.22	0.66
CLF		10.7	72.7	10.5	3.6	0.2	0.6	0.8
MBDA	59	14	8	32	5	0	0	0
Workforce		23.73	13.56	54.24	8.47	0.00	0.00	0.00
CLF		10.7	72.7	10.5	3.6	0.2	0.6	0.8
NIST	2820	78	2208	246	259	1	13	15
Workforce		2.77	78.30	8.72	9.18	0.04	0.46	0.53
CLF		10.7	72.7	10.5	3.6	0.2	0.6	0.8
NOAA	12647	347	10498	1034	616	29	82	41
Workforce		2.74	83.01	8.18	4.87	0.23	0.65	0.32
CLF		10.7	72.7	10.5	3.6	0.2	0.6	0.8
NTIA	235	6	144	59	24	0	2	0
Workforce		2.55	61.28	25.11	10.21	0.00	0.85	0.00
CLF		10.7	72.7	10.5	3.6	0.2	0.6	0.8
NTIS	116	1	69	36	8	0	0	2
Workforce		0.86	59.48	31.03	6.90	0.00	0.00	1.72
CLF		10.7	72.7	10.5	3.6	0	0	0.8
O/S	770	20	422	278	40	0	4	6
Workforce		2.60	54.81	36.10	5.19	0.00	0.52	0.78

CLF		10.7	72.7	10.5	3.6	0.2	0.6	0.8
OIG	122	4	74	29	13	0	1	1
Workforce		3.28	60.66	23.77	10.66	0.00	0.82	0.82
CLF		10.7	72.7	10.5	3.6	0.2	0.6	0.8
Sub Total	32496	1486	24242	4584	1719	50	245	170
Workforce		4.57	74.60	14.11	5.29	0.15	0.75	0.52
CLF		10.7	72.7	10.5	3.6	0.2	0.6	0.8
PTO	10136	307	4783	2233	2752	1	33	27
Workforce		3.03	47.19	22.03	27.15	0.01	0.33	0.27
CLF		10.7	72.7	10.5	3.6	0.2	0.6	0.8
TOTAL	42,632	1793	29025	6817	4471	51	278	197
Workforce		4.21	68.08	15.99	10.49	0.12	0.65	0.46
CLF		10.7	72.7	10.5	3.6	0.2	0.6	0.8

Targeted Disability
1
0.20
2.27
2
0.56
2.27
123
0.93
2.27
2
1.13
2.27
0
0.00
2.27
4
0.29
2.27
0
0.00
2.27
23
0.82
2.27
53
0.42
2.27
0
0.00
2.27
5
4.31
2.27
4
0.52

2.27
0
0.00
2.27
217
0.67
2.27
53
0.52
2.27
270
0.63
2.27